

TPP1 Antibody (monoclonal) (M01)**Mouse monoclonal antibody raised against a partial recombinant TPP1.****Catalog # AT4323a****Specification**

TPP1 Antibody (monoclonal) (M01) - Product Information

Application	WB, IHC, E
Primary Accession	O14773
Other Accession	BC014863
Reactivity	Human
Host	mouse
Clonality	Monoclonal
Isotype	IgG1 Kappa
Calculated MW	61248

TPP1 Antibody (monoclonal) (M01) - Additional Information**Gene ID** 1200**Other Names**

Tripeptidyl-peptidase 1, TPP-1, Cell growth-inhibiting gene 1 protein, Lysosomal pepstatin-insensitive protease, LPIC, Tripeptidyl aminopeptidase, Tripeptidyl-peptidase I, TPP-I, TPP1, CLN2

Target/Specificity

TPP1 (AAH14863, 195 a.a. ~ 304 a.a) partial recombinant protein with GST tag. MW of the GST tag alone is 26 KDa.

Dilution

WB~~1:500~1000

IHC~~1:100~500

E~~N/A

Format

Clear, colorless solution in phosphate buffered saline, pH 7.2 .

Storage

Store at -20°C or lower. Aliquot to avoid repeated freezing and thawing.

Precautions

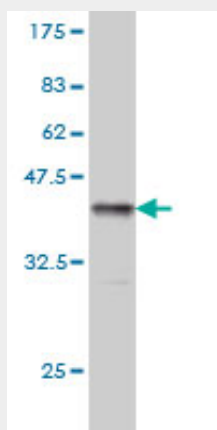
TPP1 Antibody (monoclonal) (M01) is for research use only and not for use in diagnostic or therapeutic procedures.

TPP1 Antibody (monoclonal) (M01) - Protocols

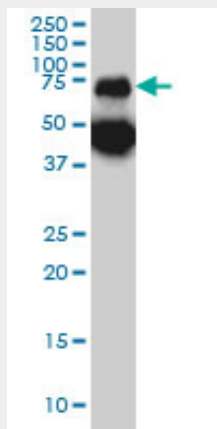
Provided below are standard protocols that you may find useful for product applications.

- [Western Blot](#)
- [Blocking Peptides](#)
- [Dot Blot](#)
- [Immunohistochemistry](#)
- [Immunofluorescence](#)
- [Immunoprecipitation](#)
- [Flow Cytometry](#)
- [Cell Culture](#)

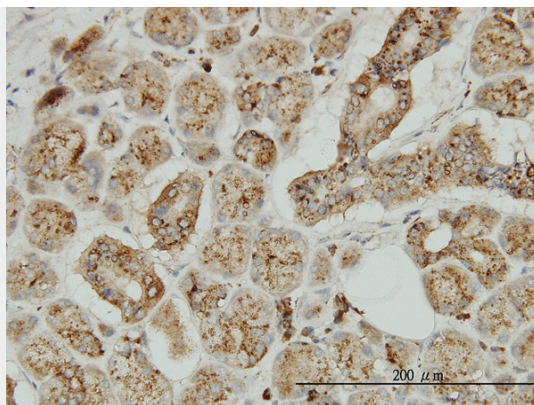
TPP1 Antibody (monoclonal) (M01) - Images



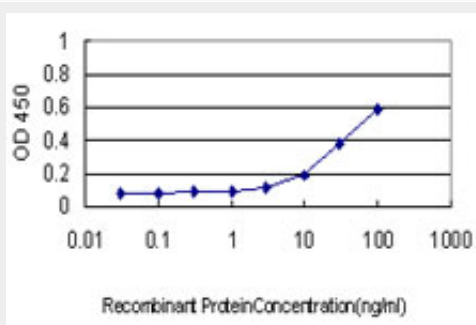
Antibody Reactive Against Recombinant Protein. Western Blot detection against Immunogen (37.84 KDa) .



TPP1 monoclonal antibody (M01), clone 3B1 Western Blot analysis of TPP1 expression in A-431 (Cat # AT4323a)



Immunoperoxidase of monoclonal antibody to TPP1 on formalin-fixed paraffin-embedded human salivary gland. [antibody concentration 3 ug/ml]



Detection limit for recombinant GST tagged TPP1 is approximately 0.1ng/ml as a capture antibody.

TPP1 Antibody (monoclonal) (M01) - Background

This gene encodes a member of the sedolisin family of serine proteases. The protease functions in the lysosome to cleave N-terminal tripeptides from substrates, and has weaker endopeptidase activity. It is synthesized as a catalytically-inactive enzyme which is activated and auto-proteolyzed upon acidification. Mutations in this gene result in late-infantile neuronal ceroid lipofuscinosis, which is associated with the failure to degrade specific neuropeptides and a subunit of ATP synthase in the lysosome.

TPP1 Antibody (monoclonal) (M01) - References

1. Altered expression of TPP1 in fibroblast-like synovial cells might be involved in the pathogenesis of rheumatoid arthritis. Qing YF, Zhou JG, Zhao MC, Xie WG, Yang QB, Xing Y, Zeng SP, Jiang H. Rheumatol Int. 2011 Jul 16. [Epub ahead of print]